

Flame 2017 Panel:

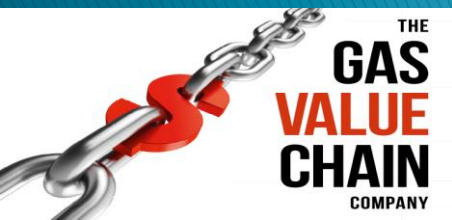
Pipelines & Interconnectors

Flame 2017

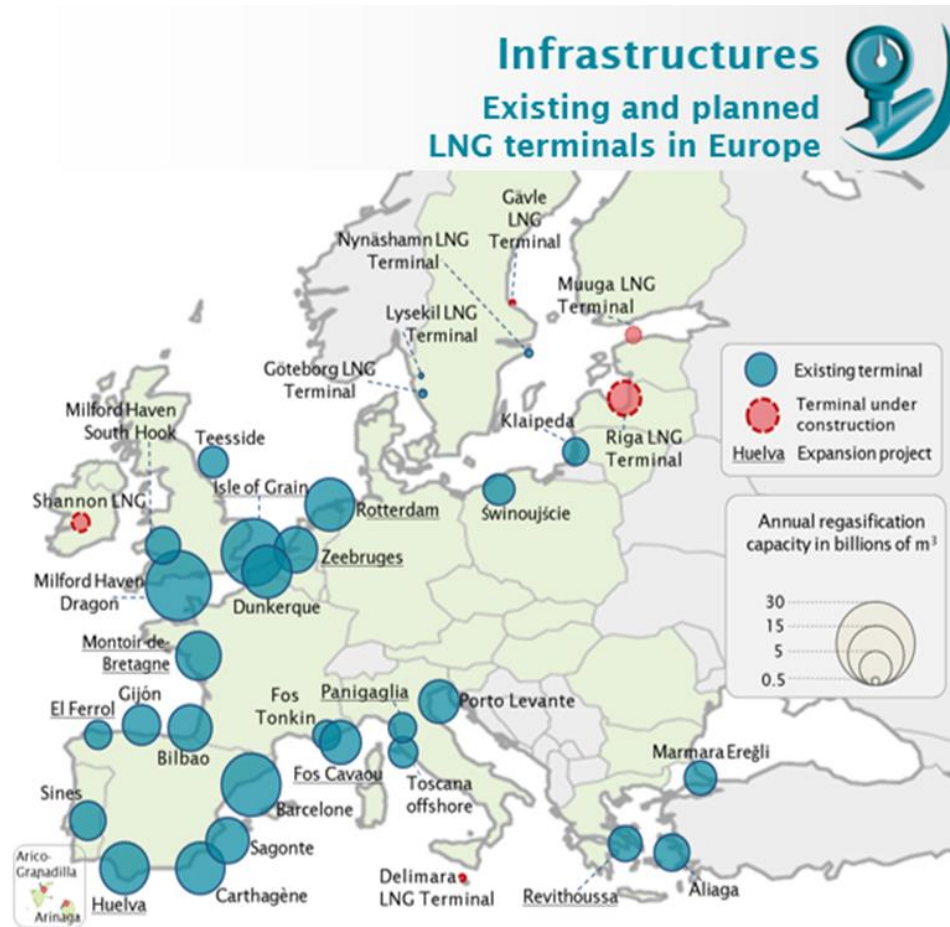
Amsterdam, 11 May 2017

Dr. Wolfgang Peters, MBA

Managing Director, The Gas Value Chain Company GmbH



Europe 'cornered' by new supplies? ~220 bcm/a LNG (75% idle)



Source : GIIGNL (2016), GLE (2015)

Europe 'cornered' by new supplies?

Southern Corridor: SCPX, TANAP, TAP



Europe 'cornered' by new supplies?

Nordstream 2, EUGAL

